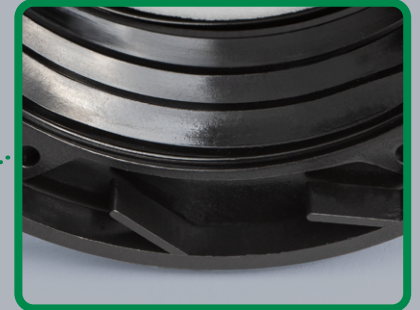


Installation instructions

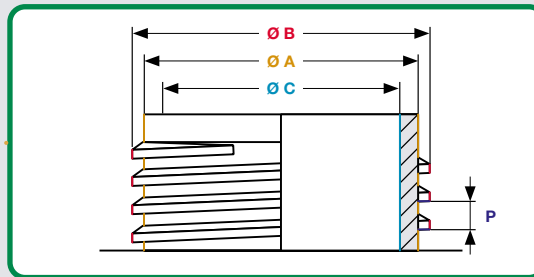
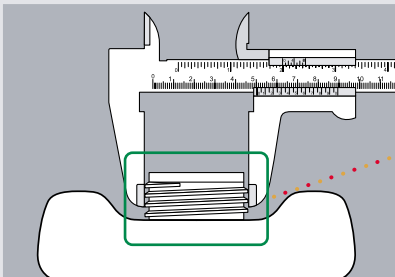
FLUXX[®] Caps



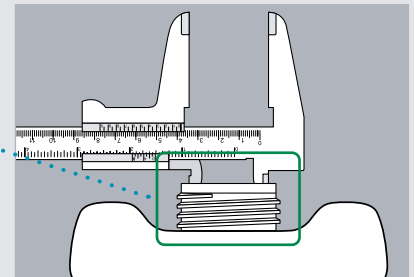
Our FLUXX[®] Caps can be used for a variety of thread sizes. For this purpose, the specified container threads must meet the dimensional requirements of our Caps. The dimensional accuracy of the individual product solution must be observed and can be found in the tables below.

	DIN 38	DIN 40	DIN 45	DIN 50	DIN 51	DIN 61	DIN 63	DIN 71
Ø A ^{*1}	35.7 mm	38.0 mm	40.6 mm	46.0 mm	48.8 mm	54.3 mm	59.4 mm	65.0 mm
Ø B ^{*2}	37.6 mm	41.8 mm	44.2 mm	49.5 mm	53.5 mm	59.5 mm	63.5 mm	71.0 mm
Ø C ^{*3}	29.0 mm	33.0 mm	35.0 mm	39.5 mm	43.6 mm	48.5 mm	55.0 mm	57.4 mm
↑ P ^{*4}	3.0 mm	4.0 mm	4.0 mm	4.0 mm	5.0 mm	6.0 mm	4.2 mm	7.0 mm

Outer dimensions

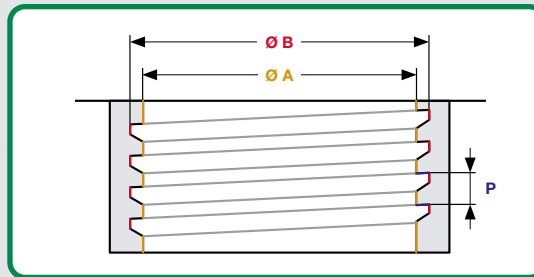
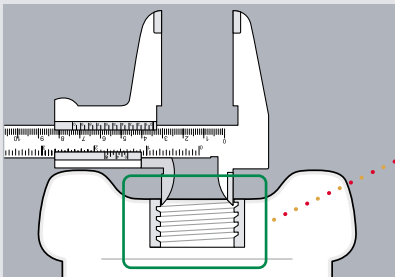


Inner dimension



	R ¾" BSP thread	BCS 70x6 rough thread	BCS 56x4 rough thread	PPS 2" fine thread
Ø A ^{*5}	24.8 mm	64.0 mm	51.9 mm	56.6 mm
Ø B ^{*6}	28.9 mm	70.0 mm	57.0 mm	59.2 mm
↑ P ^{*7}	1.8 mm	6.0 mm	4.0 mm	2.3 mm

Inner dimensions



Tolerances: ^{*1} ± 0.3 mm; ^{*2} ± 0.3 mm; ^{*3} ± 0.7 mm; ^{*4} ± 0.1 mm; ^{*5} ± 0.3 mm; ^{*6} ± 0.3 mm; ^{*7} ± 0.1 mm

The information regarding dimensional accuracy is intended to support measurement procedures for identifying suitable product solutions. When adapting or building new tools, the dimensional accuracy has to be aligned with the market-specific standardization. The dimensional accuracy must always be checked on a case-by-case basis. Our experts will be pleased to advise you.